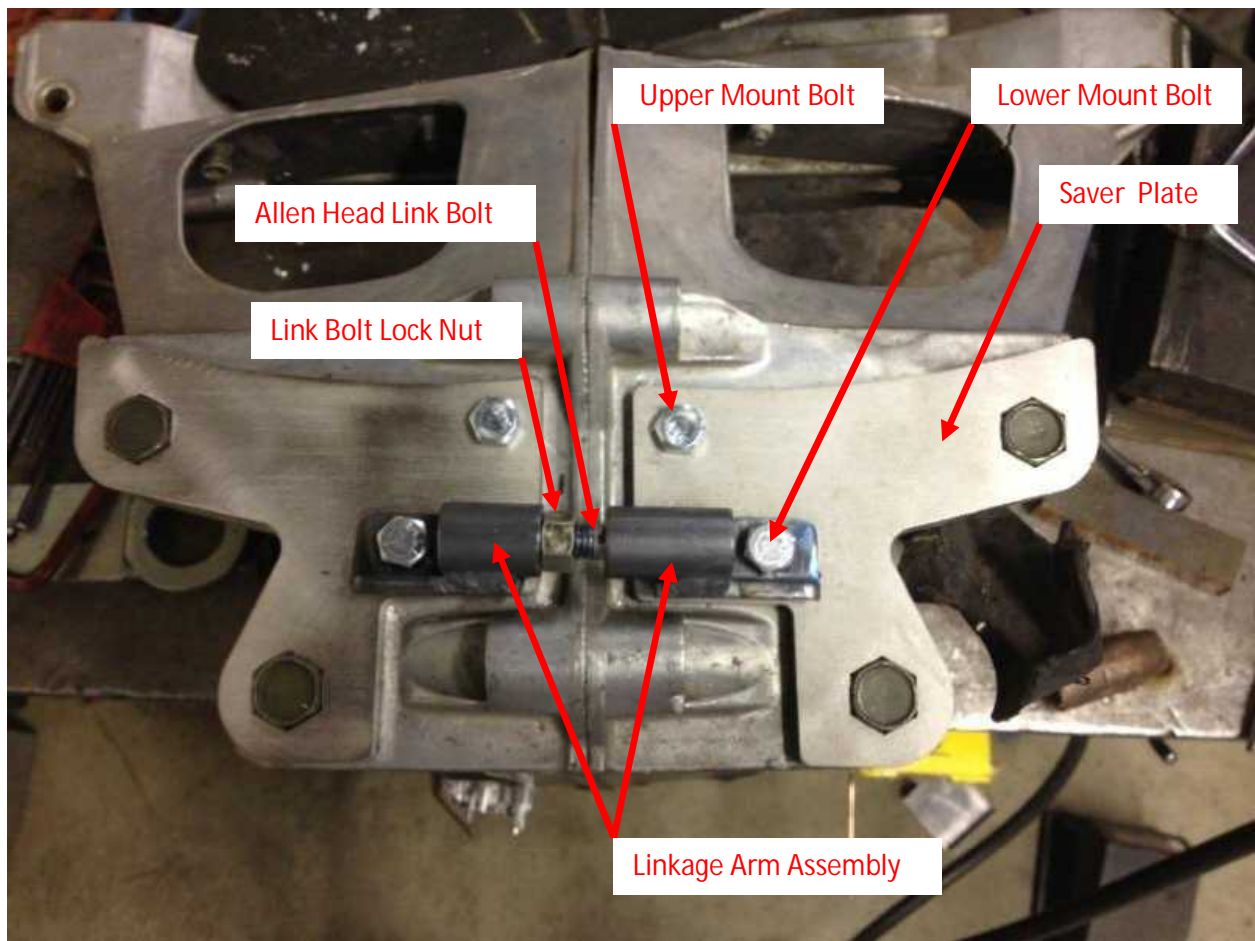


## Parts List

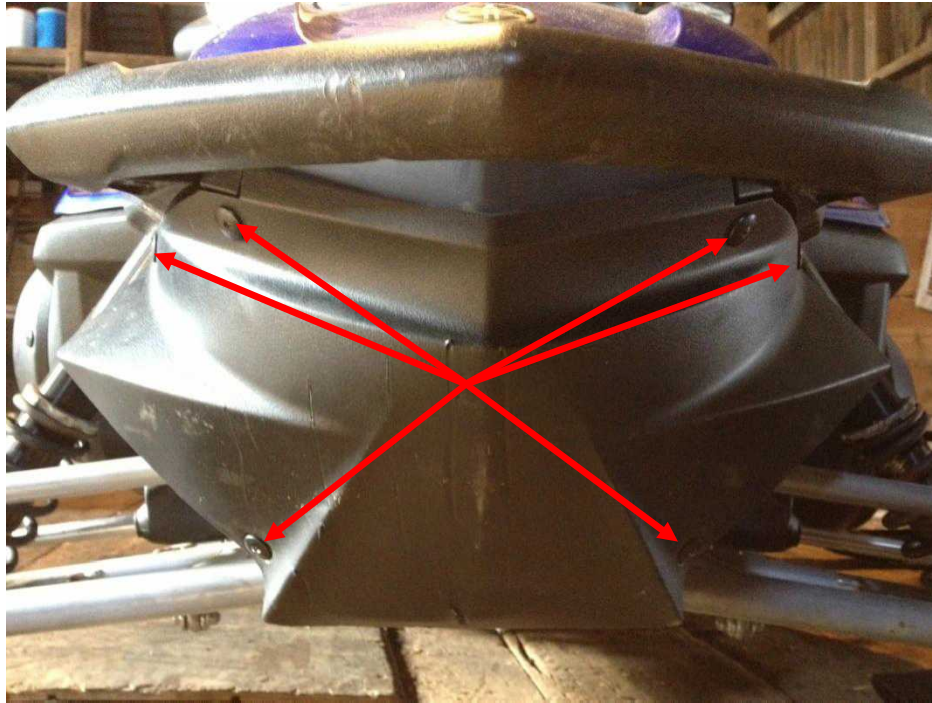
Item	Qty
Saver Plate Halve ( repair kit will have bolt welded to one halve)	2
Upper & Lower Mounting Bolts	4
Lock Nuts	4
Linkage Arm Assembly	1
Bushing (repair kit only)	1

## Part Identification

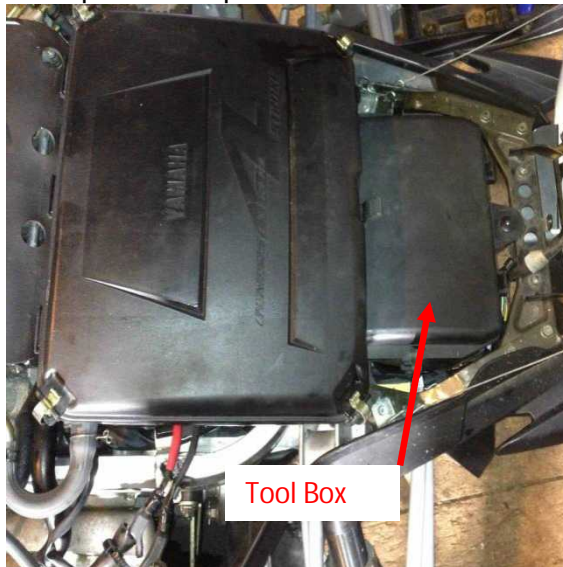


## Installation Instructions

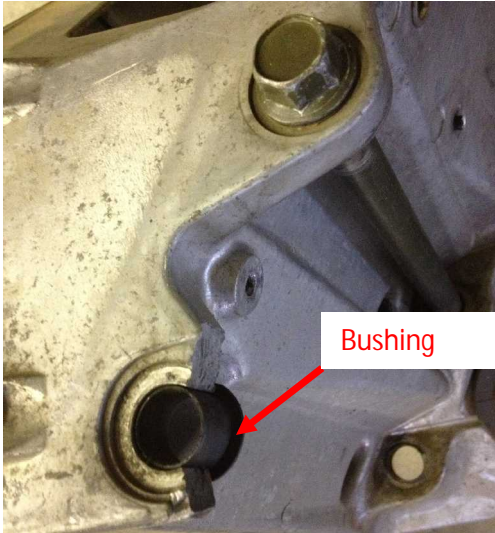
1. Remove the (6) Philips Pan Head screws that secure the front nose cone.



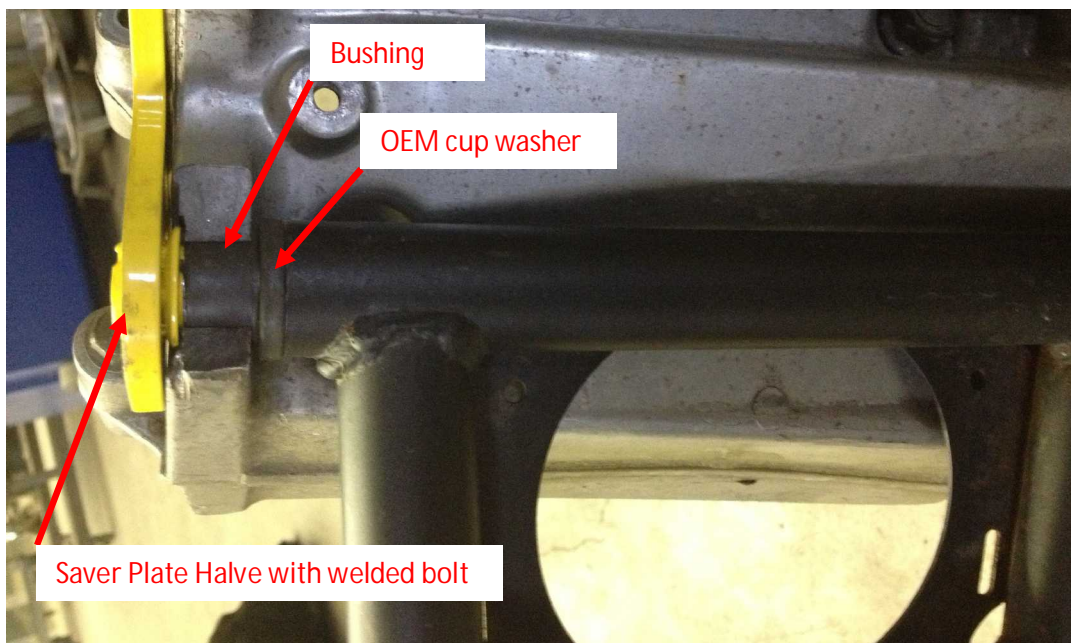
2. Next remove air box on sleds equipped with a tool box in the nose. Then proceed to remove the tool box. If your sled is not equipped with a tool box simply just remove the cover plate in its place.



3. Install one of the saver plate halves onto the bulkhead. The a-arm bolt heads will have to be rotated accordingly so they match up with the saver plate. **If the saver plate half has the lower a-arm bolt welded to it, make sure the supplied bushing is installed in the broken ear as shown in picture below.**



4. Using a drill with a 5/16" drill bit, drill through the upper mounting hole into bulkhead.
5. Place an upper mounting bolt through the hole just drilled. Install flanged nut on backside and tighten. **If the saver plate half has the lower a- arm bolt welded to it the arm must be installed prior to bolting the plate to the bulkhead.**



6. Drill the lower mounting hole with the 5/16" drill bit.
7. Repeat steps 3 thru 6 for the opposite side.
8. Adjust the allen head link bolt accordingly so each end of the linkage arm can be bolted to the lower mounting hole.
9. Install the linkage arm using 5/16" lower mounting bolts and flanged nuts on backside. Lightly tighten these bolts. The linkage should be permitted to slide back and forth.
10. Lightly tighten the allen head link bolt just enough to take out slack and draw the two ends of the linkage together.
11. When all slack is removed tighten the link bolt lock nut
12. Tighten the lower mounting bolts.