

# Instructions, Yamaha Proactive Idler Wheel Collars P/N's 040S0001 & 040K0001

GArserio Enterprises  
garserio@rochester.rr.com

## Section 1: Features & Specifications



- Allows you to upgrade your stock inner idler wheels from a 12mm wide bearing (6005 Series) to a 15mm wide bearing (6205 Series).
- Machined from 6061-T6 Aluminum bar stock.
- Uses 6mm set screws from stock collars.

## Section 2: Application Chart

These replacement collars replace Yamaha P/N 8ES-47319-00-00 as used on Yamaha Proactive suspensions:

2005 RS Vector (ER)

2006-7 Nytro (ER)

2007 RTX

2005-07 RS Venture (GT)

## Section 3: Installation Instructions

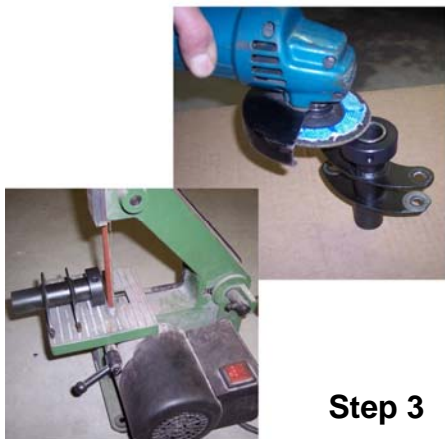
To use these replacement collars, you must shorten the length of the lower pivot arm that the center shock attaches to. Each end of the pivot arm needs to have 0.060" removed. The ideal way to do this is using a lathe. However, you can perform this operation by using our optional kit (P/N 040K0001) with your angle grinder, bench grinder, or belt sander. Once the pivot arm has been shortened, mount your new wheels to the collars and reassemble. NOTE that the collars are a slight press fit onto the wheels. This is just like the stock collars to ensure that the inner bearing race does not spin on the collar. Use a press, vise or a rubber mallet to attach the wheel to the collar. Another trick is to cool the collars in your freezer before assembly.



Step 1



Step 2



Step 3



Step 4

### Pivot Arm Modification Kit Instructions:

1. Set grinding depth with the Locking Collar and 0.060" Shim.
2. Position the Locking Collar so that the Shim is flush with the top of the Pivot Arm Tube. Tighten the Locking Collar and then remove the Shim.
3. Remove material until the tube is flush with the Collar. Use any commonly available power tool. However, an angle grinder followed up with a belt sander works best.
4. Repeat process on both sides and then remove the Collar.