

# Technical BULLETIN

©2016 YAMAHA MOTOR CORPORATION, U.S.A.

## ALL 2014 ~ 2016 SRVIPER SNOWMOBILE MODELS – Product Update – ECU Reprogramming

**Problem:** Starter idler gear or starter motor may break during cold engine starting.

**Cause:** The ECU is not equipped with an engine kickback control feature. Under certain starting conditions, the fuel injection mapping may allow a misfire, causing the engine to rotate backward and damage starting system components.

**Remedy:** Reflash the stock ECU with new programming parameters provided by Yamaha.

**NOTE:** This modification does not alter the emissions compliance of the product.



### DEALER ACTION SUMMARY

**IMPORTANT:** Before proceeding:

1. Check that the unit is included in the PID Range under the *Affected Range* section.
2. Also check that the unit has not already been inspected or modified; see Identification Procedure section.

### Unsold Units & Sold

**Units:** Install the updated ECU program in all units being serviced at your dealership.

**Parts:** No. However the Y.S.D.T. (Yamaha Snowmobile Diagnostic Tool) is required to install the updated ECU program.



### AFFECTED RANGE

Model Year	Model	Sales Name	PID Range
2014	SR10REB	SRViper	8JP00 0000101 ~ 0000499
	SR10RSEL, SR10RSER	SRViper RTX SE	8JW00 0000111 ~ 0000870
	SR10LEB	SRViper LTX	8JX00 0000013 ~ 0000823
	SR10LSEL, SR10LSER	SRViper LTX SE	8JY00 0000107 ~ 0001383
	SR10XSEL, SR10XSER	SRViper GTX SE	8JR00 0000033 ~ 0001718
2015	SR10RDFOB, SR10RDFOB	SRViper R-TX DX	8JP20 0000102 ~ 0000400
	SR10RSFL, SR10RSFR	SRViper R-TX SE	8JW20 0000101 ~ 0000406
	SR10RLFO	SRViper R-TX LE 1.25	8KN10 0000101 ~ 0000161
	SR10RLFL	SRViper R-TX LE 1.75	8KN30 0000101 ~ 0000194
	SR10LDFOB, SR10LDFOB	SRViper L-TX DX	8JX20 0000140 ~ 0000985
	SR10LSFL, SR10LSFR	SRViper L-TX SE	8JY20 0000302 ~ 0001014
	SR10LSFO	SRViper L-TX LE 1.25	8JY20 0000101 ~ 0000284
	SR10LLFO	SRViper L-TX LE 1.75	8KP10 0000101 ~ 0000212
	SR10SDFB, SR10SDFR	SRViper S-TX DX	8KV10 0000103 ~ 0000691
	SR10XSFL, SR10XSFR	SRViper X-TX SE	8JR30 0000101 ~ 0000785
	SR10XLFO	SRViper X-TX LE	8KR10 0000101 ~ 0000240
	SR10M53FB	SRViper M-TX 153	8KG10 0000001 ~ 0000471

Model Year	Model	Sales Name	PID Range
2015 (Cont.)	SR10M53SFL, SR10M53SFR	SRViper M-TX SE 153	8KS10 0000103 ~ 0000402
	SR10M62SFL, SR10M62SFR	SRViper M-TX SE 162	8KT10 0000108 ~ 0000600
	SR10M62LFO	SRViper M-TX LE 162	8KU10 0000102 ~ 0000294
2016	SR10RDGB, SR10RDGR	SRViper R-TX DX	8JP30 0000101 ~ 0000336
	SR10RSG, SR10RSGR	SRViper R-TX SE	8JW40 0000101 ~ 0000375
	SR10RLGL, SR10RLGW	SRViper R-TX LE	8KN40 0000101 ~ 0000190
	SR10LDGB, SR10LDGR	SRViper L-TX DX	8JX30 0000101 ~ 0000745
	SR10LSGL, SR10LSGR	SRViper L-TX SE	8JY40 0000102 ~ 0000611
	SR10LLGW	SRViper L-TX LE	8KP30 0000101 ~ 0000336
	SR1ELLGL	SRViper L-TX LE 1.25	8KP50 0000101 ~ 0000300
	SR10SD37GR	SRViper S-TX DX 137	8LJ10 0000101 ~ 0000391
	SR10SD46GB	SRViper S-TX DX 146	8LN10 0000111 ~ 0000421
	SR10XSG, SR10XSGR	SRViper X-TX SE	8JR60 0000101 ~ 0000558
	SR10XLGL, SR10XLGW	SRViper X-TX LE	8LH10 0000107 ~ 0000225
	SR10MS41GL, SR10MS41GR	SRViper M-TX SE 141	8LK10 0000105 ~ 0000272
	SR10M53GB, SR10M53GR	SRViper M-TX 153	8KG30 0000102 ~ 0000196
	SR10MS53GL, SR10MS53GR	SRViper M-TX SE 153	8KS30 0000102 ~ 0000208
	SR10ML53GL, SR10ML53GW	SRViper M-TX LE 153	8LL10 0000101 ~ 0000161
	SR10M62GB, SR10M62GR	SRViper M-TX 162	8LM10 0000102 ~ 0000179
	SR10MS62GL, SR10MS62GR	SRViper M-TX SE 162	8KT30 0000103 ~ 0000215
	SR10ML62GW	SRViper M-TX LE 162	8KU30 0000101 ~ 0000158
	SR1EML62GL	SRViper M-TX LE 162	8KU60 0000103 ~ 0000220



## SERVICE PROCEDURES

**IMPORTANT:** Reprogramming the ECU will take time, and any interruption in the process may cause the ECU to malfunction. Do not touch the keyboard or the mouse during the process.

**Snowmobile:** Ensure the battery is fully charged.

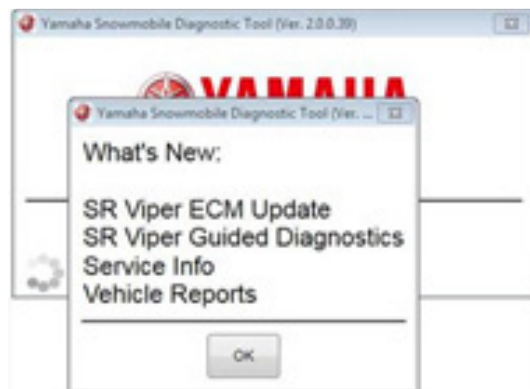
**NOTICE:** Do not connect the battery cables to anything other than a 12-volt battery. Use of an external power supply or battery charger will result in damage to the ECU and the computer.

**Computer:** Turn off your computer's screensaver function before reprogramming. Also, do not use low power mode or turn off your computer while reprogramming.

**Y.S.D.T.:** Y.S.D.T. will prompt you to accept and load the latest software upon connection with the internet. (Photo above is an example of the prompt screen which may change based on what's new and what has been loaded in your computer.)

1. Connect the unit to Y.S.D.T.
2. Refer to the "ECU UPDATE Screen" in the Y.S.D.T. User Guide on page 17 (available through your on-line YDS Tech Library).

**TIP:** Always ensure the unit's battery is fully charged before attempting any service procedure, including this modification. After a successful modification, always check and clear error codes.





## IDENTIFICATION PROCEDURE

A modified unit can be identified two ways:

1. Check status in YDS > Service > Warranty Claims/Authorization > Unit Status using the VIN (frame number) located on the tunnel:  
Status: **Pending** = **MODIFICATION REQUIRED.**  
Status: **Completed** = Unit has been modified and no action is required as per this bulletin.
2. An indication of the hardware-programmed part number "0730-260" or "0730-261" or "0730-262" displayed in the ECU ID screen of the Y.S.D.T. (programs are based on factory sprocket type: 7-tooth, 8-tooth or 9-tooth drive sprockets.).



## WARRANTY INFORMATION

Service of all affected units is authorized regardless of warranty status. After completion, select Campaign Number **090X** from the Campaign Number pull-down menu in YDS when entering your claim. The labor allowance is **0.2 hour**.

This Service-per-Bulletin 90 code (**090XF**) will expire 12/21/2017.