

Technical BULLETIN

©2007 YAMAHA MOTOR CORPORATION, U.S.A.

2007 PZ50W/FXW/GTW/MW/VTW

Quality Assurance Updates – Air Intake Silencer, Engine Mount, and Air Intake Snow Protection

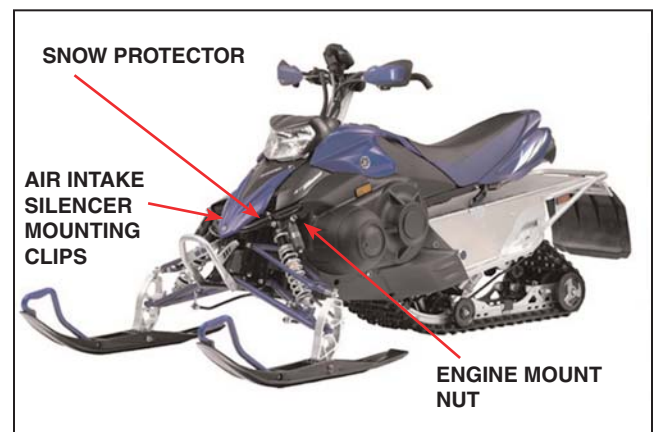
i

INTRODUCTION

Symptom:

Affected models may exhibit any or all of three symptoms:

- The Air Intake Silencer Mounting Clips inside the silencer may come loose due to a rivet failure.
- The front left-side engine mount nut may not have reached the specified torque at factory due to a possible uneven contact between the nut and washer.
- During deep-snow riding conditions, the force of the snow may deform the front frame protector, which may allow snow to pass into the air intake system.

**Remedy:**

Install a PZ50 Hinge Rivet Kit and a PZ50 Snowing Kit on all affected units. Also tighten the front left-side engine mount bolt and nut to a new torque specification.



DEALER ACTION SUMMARY

NOTE: For maximum service department efficiency, this modification should be done at the same time as the recall modification announced in Technical Bulletin S2007-006R.

Sold

Units: Install both a PZ50 Hinge Rivet Kit and a PZ50 Snowing Kit during an affected unit's next regular maintenance or other service. Before beginning the modification, verify that the modification has not been performed already (refer to Identification Procedure in this bulletin).

Unsold

Units: During pre-delivery inspection (PDI), install a PZ50 Hinge Rivet Kit and a PZ50 Snowing Kit on all affected units, and retighten specific engine mount bolt and nut.

Parts

Required: Yes, both a PZ50 Hinge Rivet Kit and a PZ50 Snowing Kit. The Venture Lite model has a different Snowing Kit than the Phazer models.

Warranty: Submit a Service-Per-Bulletin (90 Code) Warranty Request for parts and labor.



AFFECTED RANGE

All 2007 PZ50W (Phazer)
All 2007 PZ50GTW (Phazer GT)
All 2007 PZ50FXW (Phazer FX)
All 2007 PZ50MW (Phazer Mountain Lite)
All 2007 PZ50VTW (Venture Lite)



SERVICE PROCEDURES

For the following procedures, refer to the appropriate sections in the Service Manual (P/N: LIT-12618-02-58) available YDS.

NOTE: For service department efficiency, perform this modification at the same time as the recall modification described in Technical Bulletin S2007-006R. Step 1 of this bulletin is the same as Step 1 of the recall bulletin. If you are doing both modifications at the same time, do the procedures in this bulletin after completing step 10 of S2007-006R, then go back and finish that bulletin's steps.

Air Intake Silencer Modification

If you have already performed steps 1~11 from bulletin S2007-006R, then skip to step 2, otherwise proceed as follows:

1. Remove the intake silencer.

Phazer models:

Remove the windscreen (if equipped) and front panel, headlight cover, right and left side covers and side panels.

PZ50VTW (Venture Lite):

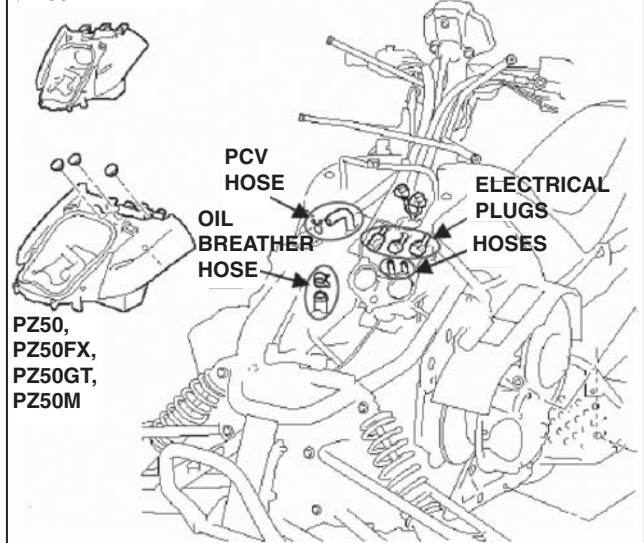
Open the shroud. Remove the spare belt (if equipped). Remove the right and left side covers and side panels. Note how the side covers were installed for proper reassembly later.

All models:

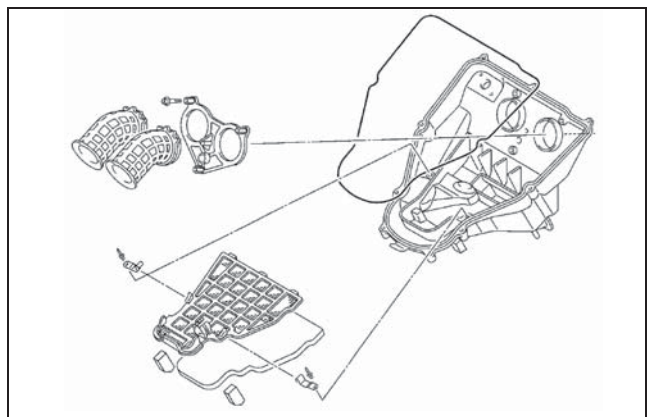
Remove the 3 rubber plugs to access the mounting bolts. Disconnect the 3 electrical plugs from the air pressure and air temperature sensors. Disconnect the 2 hoses from beneath the air pressure sensors. Disconnect the PCV hose from behind the air silencer. Disconnect the large diameter oil breather hose from beneath the air silencer. Then remove the intake silencer.

2. Remove the screws, and then split the upper and lower cases of the air intake silencer.

PZ50VT



PZ50,
PZ50FX,
PZ50GT,
PZ50M

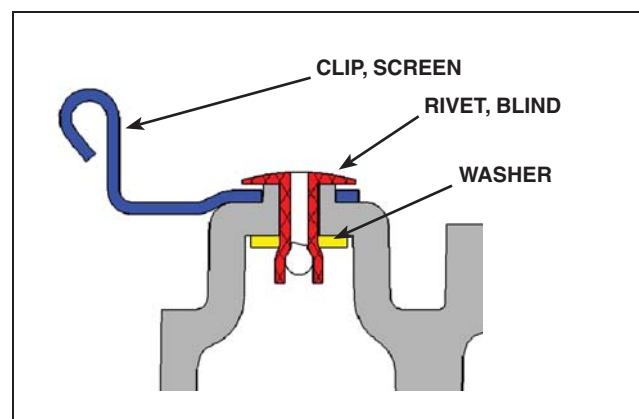


- Secure the lower case, and then drill out the original rivet from each clip, using a 3.2mm (1/8") drill bit.

NOTE: Take care not to damage the clips as they will be reused.



- Reinstall the air silencer mounting clips using the new rivets and washers from the PZ50 Hinge Rivet Kit.



CAUTION:

The washer is small and thin; take care to properly locate the washer on the bottom of the intake silencer before installing the rivet so the washer is not lost.



5. Reassemble the air intake silencer but do not re-install it at this time.

NOTE: Should the lower intake silencer become damaged during this modification, a replacement may be ordered using part number 90891-50141-00 (includes new-style rivets pre-installed).

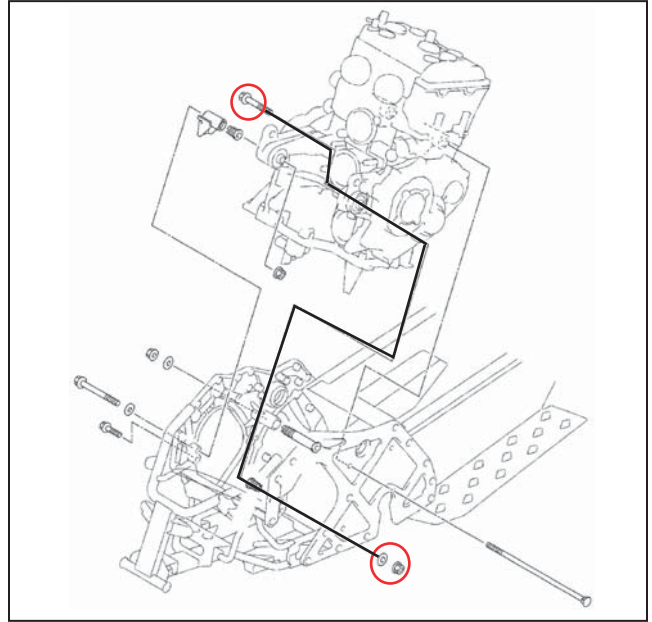
Engine Mount Nut Retightening

6. Retighten the front left engine mount nut indicated in the adjacent illustration to the new specification below.

Engine mount nut tightening torque:
70 Nm (7.1 kg•m, 52 ft•lb)

TIP:

Hold the nut with a 14mm wrench and tighten the bolt to specification with a torque wrench and a 14mm socket from the engine side.



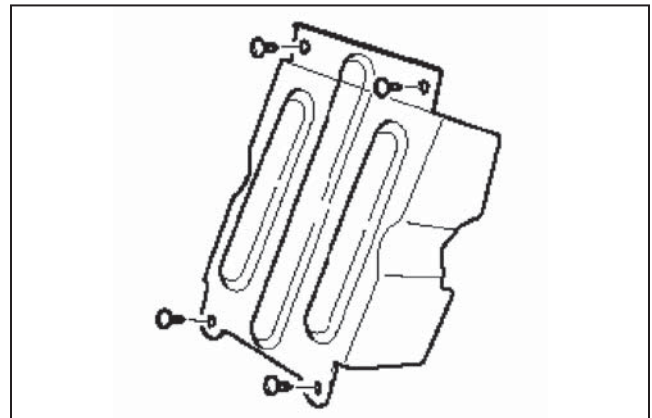
Snow Protector Brackets Installation

7. Remove 4 plastic rivets and the pivot arm cover (if not already removed).

NOTE: Should any rivet break during manipulation, replacement parts may be ordered using part number 90269-05003-00.

TIP:

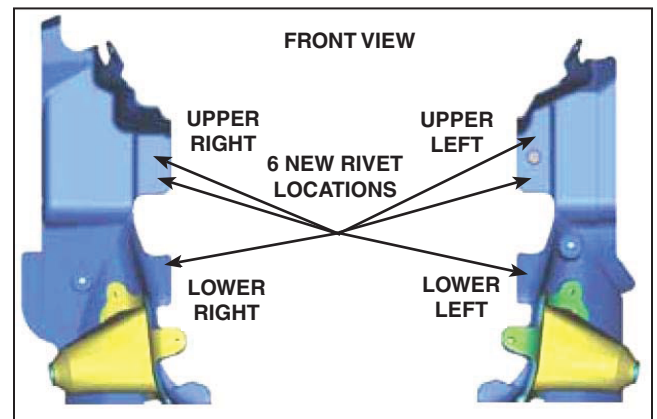
- Support the front of the unit with a stand or suitable floor jacks.
- Remove both front shocks for easier access and additional working room.



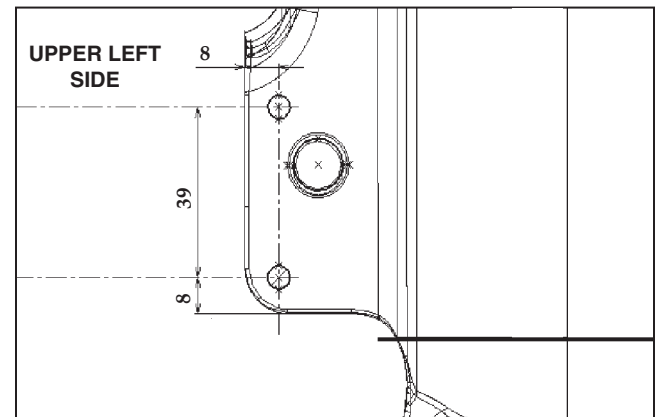
8. On the plastic frame protector, mark the location of the 6 mounting rivets (3 on each side) using the adjacent illustrations as a guide and the new brackets as templates.

There are two distinct areas on upper side and lower side on each side.

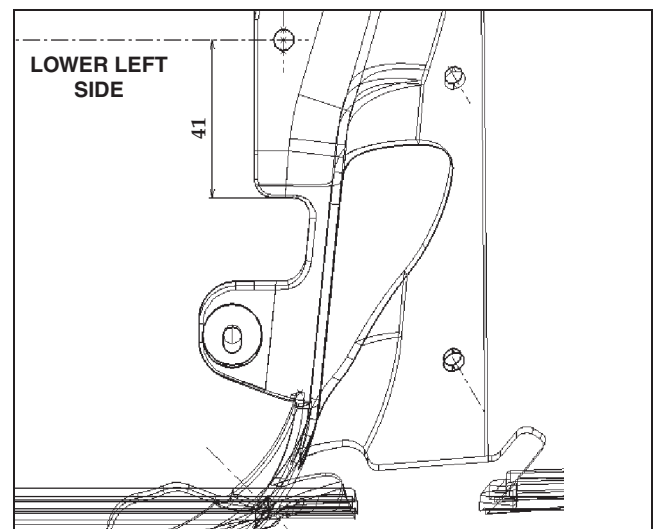
Starting on the upper left side, mark the position of the holes to be drilled as shown in the adjacent illustration.



9. For the upper left side marks, scratch a full-length vertical line 8mm from the edge. Mark the location of the bottom hole 8mm from the bottom edge. Mark the location of the top-hole 39mm above the bottom hole. Use one of the small brackets (metal bracket 4) as a template to position the holes in the correct location.



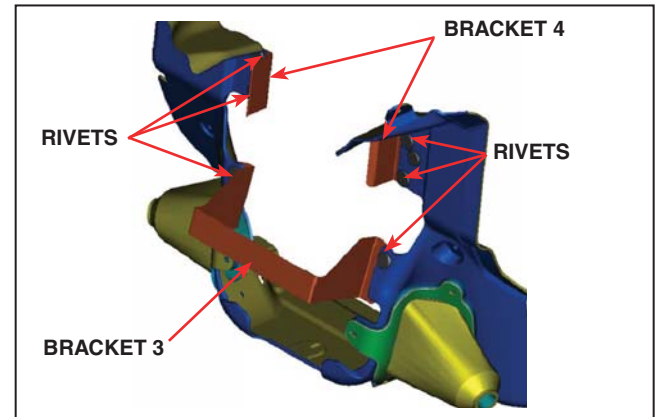
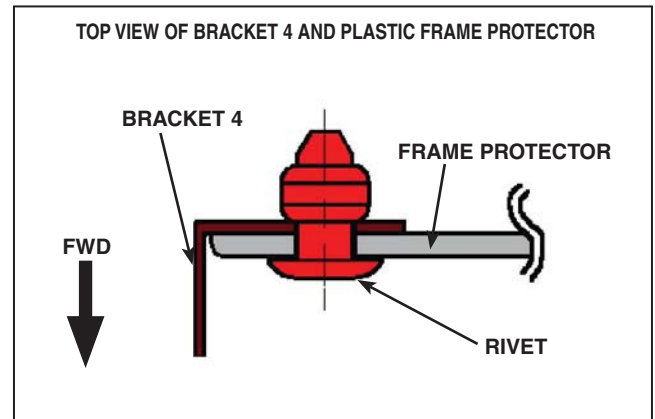
10. For the lower left side marks, scratch a vertical line in the upper region 8mm from the edge. Locate this hole 41mm from the bottom edge.
11. Repeat the procedure from steps 9 and 10 for the right side.
12. Using a 5.5mm (7/32") drill bit, make 6 rivet holes (3 on each side).



13. Insert two rivets through the plastic frame protector in the upper left side and then through the metal bracket 4 from the PZ50 Snowing Kit.

CAUTION:

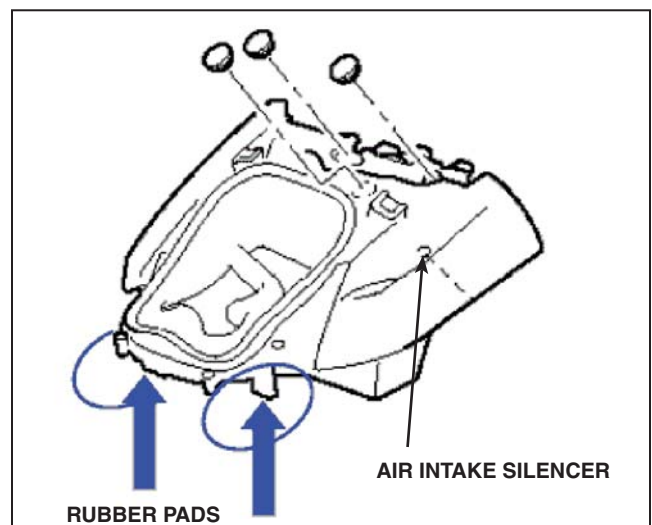
Place all brackets behind the plastic frame protector and rivets in front (see adjacent illustration). All brackets must be orientated towards the front of the vehicle (see adjacent illustration).



14. Insert the rivet through the plastic frame protector in the lower left side and then through the left side of the metal bracket 3 from the PZ50 Snowing Kit.
15. Repeat steps 13 and 14 for the right side.
16. Re-install the front shocks.

Upper and lower front shock mounts torque:
45 Nm (4.5 kg•m, 33 ft•lb)

17. For all models except PZ50VT, install the two rubber silencer pads (one right, one left) under the air silencer as illustrated. The rubber pads will press fit around the air silencer contours (see adjacent illustration).
18. Install all parts in reverse order of disassembly.



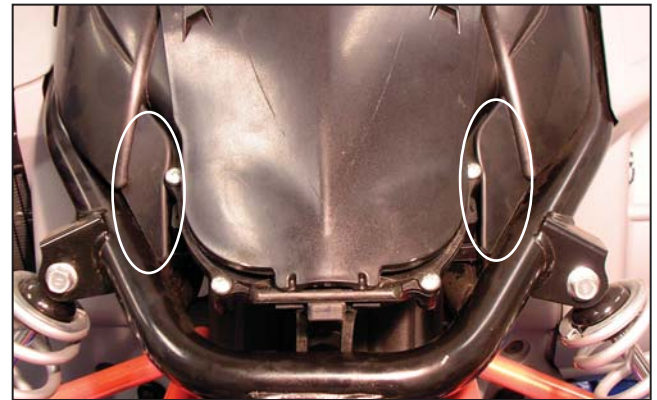
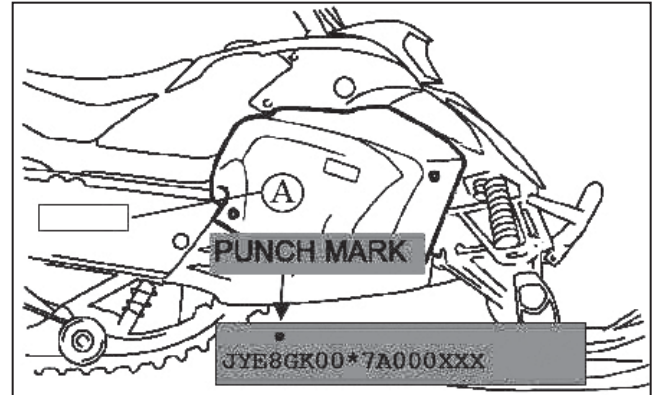


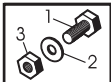
IDENTIFICATION PROCEDURE

A modified unit may be identified by a punch mark above the number "8" of the engraved VIN (frame number) (A) as shown. Before modifying a unit, check for this punch mark.

Additionally, Phazer models may be identified by the additional black rubber pads located at the front corners of the intake silencer (see adjacent lower photo).

If you encounter an unfamiliar unit and you are unsure if the unit has been modified check first for the brackets before performing the procedure. You can check the modification status by checking YDS or by contacting your RTA.





PARTS INFORMATION

Order a PZ50 Hinge Rivet Kit for each unit, and then the Snowing Kit for the particular model (Venture Lite uses a different kit).

Part Number	Description	Application	Qty.	
90891-50140-00	PZ50 Hinge rivet Kit <ul style="list-style-type: none">• Rivet , Blind 90267-32013-00 (2 pcs)• Washer 90201-03014-00 (2 pcs)	All 2007 PZ50 models	1	
90891-50142-00	PZ50 Snowing Kit <ul style="list-style-type: none">• Plate Steering Bracket 3 (1 pc)• Plate Steering Bracket 4 (2 pcs)• Pad Silencer 1 8GC-78251-00 (1 pc)• Pad Silencer 2 8GC-78252-00 (1 pc)• Rivet, Blind 90267-47187-00 (6 pcs)	2007: PZ50W, PZ50GTW, PZ50FXW, and PZ50MW	1	
90891-50143-00	PZ50 Snowing Kit <ul style="list-style-type: none">• Plate Steering Bracket 3 (1 pc)• Plate Steering Bracket 4 (2 pcs)• Rivet, Blind 90267-47187-00 (6 pcs)	2007 PZ50VTW (Venture Lite)	1	



WARRANTY INFORMATION

Service of all affected units is authorized regardless of warranty status.

To receive credit for the parts and labor, select **090UE** from the Problem Code pull down menu in the Yamaha Dealer System (YDS). If submitting a paper warranty claim, use Problem Code **90UE** The labor allowance for this modification is **0.9** hour.